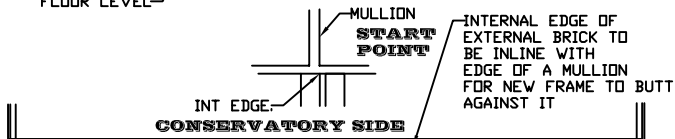
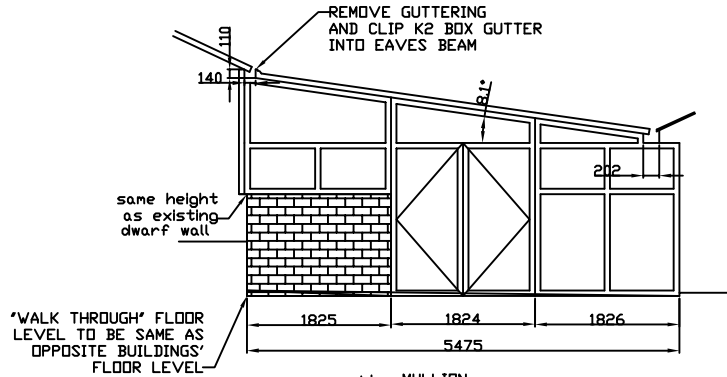


BRAND



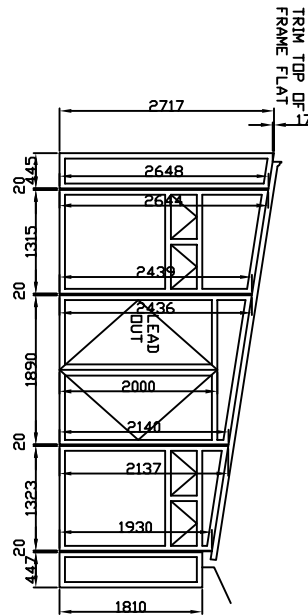
250mm CAVITY WALL CONSTRUCTION, BRICK FACED TO MATCH EXISTING SAME HEIGHT AS EXISTING DWARF WALL

CONCRETE BASE TO SAME LEVEL AS POINT A

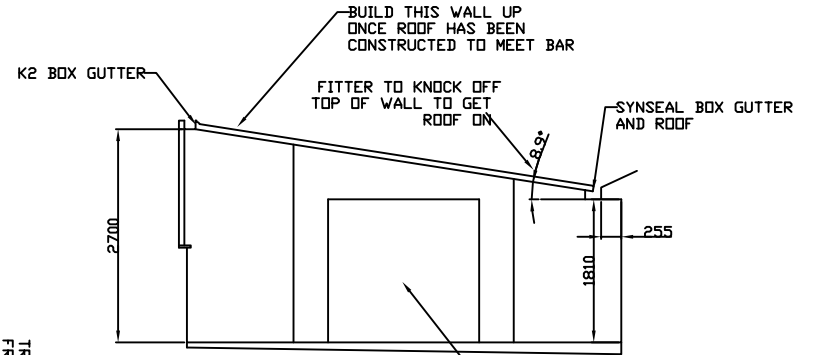
FLOOR IS ON AVERAGE A CORSE ABOVE THIS POINT.

ONCE BASE IS DONE, I WILL REMEASURE

BUILD THIS WALL UP ONCE ROOF HAS BEEN CONSTRUCTED TO MEET BAR



BRAND



180mm CILLS

FRAME SAT BACK 35mm

