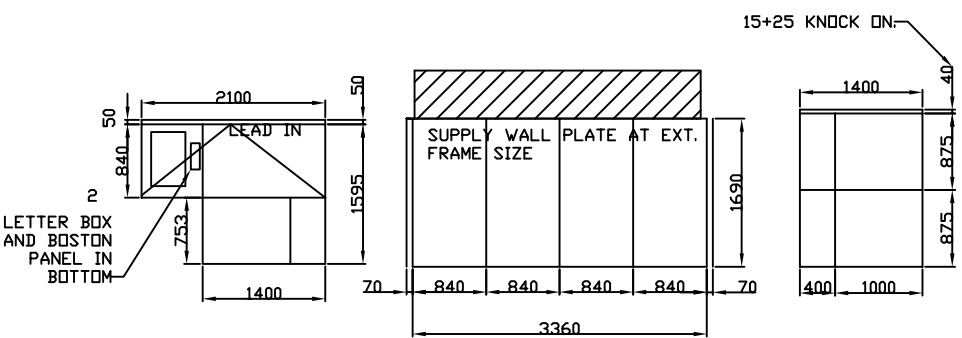
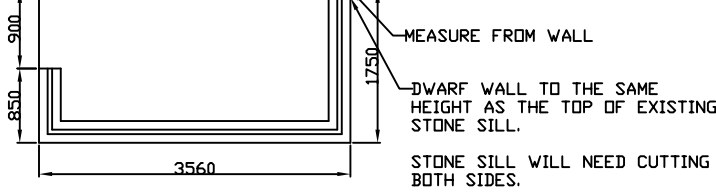


INSULATED CONCRETE BASE TO F.F.L OF HOUSE APPROX. 300mm ABOVE GROUND LEVEL.

DWARF WALL 250mm CAVITY WALL CONSTRUCTION, BRICK FACED ON THE OUTSIDE, TO A HEIGHT OF 700mm ABOVE BASE LEVEL. THERMALITE BLOCK INSIDE. ALL INTERNAL WALLS TO BE PLASTERED.

DECORATIVE BRICK AT DASH JOINT NEEDS TO BE KNOCKED OFF BEFORE IT CAN BE PLASTERED.



WHITE FRAMES
25mm BRONZE POLY
5 DEGREE PITCH
BRUSHED STEEL HANDLES

