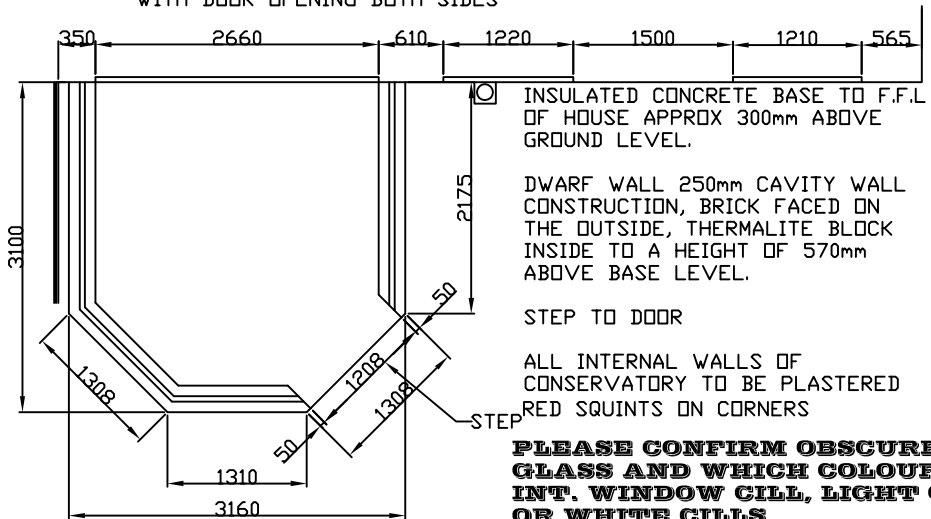


START POINT
INTERNAL EDGE OF WALL FLUSH
WITH DOOR OPENING BOTH SIDES



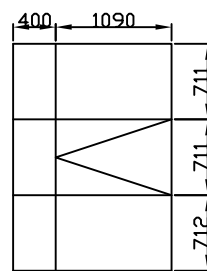
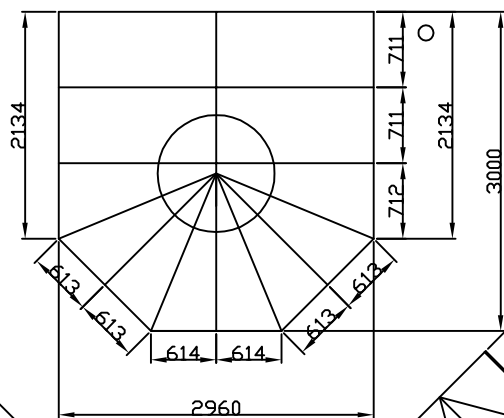
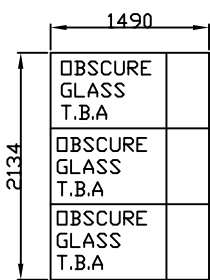
INSULATED CONCRETE BASE TO F.F.L.
OF HOUSE APPROX 300mm ABOVE
GROUND LEVEL.

DWARF WALL 250mm CAVITY WALL
CONSTRUCTION, BRICK FACED ON
THE OUTSIDE, THERMALITE BLOCK
INSIDE TO A HEIGHT OF 570mm
ABOVE BASE LEVEL.

STEP TO DOOR

ALL INTERNAL WALLS OF
CONSERVATORY TO BE PLASTERED
RED SQUINTS ON CORNERS

**PLEASE CONFIRM OBSCURE
GLASS AND WHICH COLOUR OF
INT. WINDOW GILL, LIGHT OAK
OR WHITE CILLS.**



**LIGHT OAK BOTH SIDES
25mm BRONZE POLY
25 DEGREES**

**GOLD HANDLES
GOLD SPACER**

